

# AVENUE Patented

## metalfire

### Technical Document

#### AVENUE MF 1600-40 GHE 2SR

##### Dimensions (mm)

- combustion opening WxDxH: 1644x336x390
- external WxDxH: 1728x444x770
- diameter flue: Ø130/200 or  
(\*) Ø100/150

##### TECHNICAL DATA

- Gascat: I2E+, I2E, I2H, I2L, I2ELL
- ECOLABEL: B
- load input: 11,40 kW
- load output: 9,50 kW
- efficiency capacity: 83,3 %
- type of gas/pressure: G20/G25

##### - Gascat: I3B/P, I3+

- ECOLABEL: B
- load input: 9,20 kW
- load output: 7,60 kW
- efficiency capacity: 83,1 %
- type of gas/pressure: G30/G31

##### - Appliance type: C11,C31,C91

C12,C32,C42,C52,C82

- Weight: 150 kg
- Convection air inlet: min700cm2 (4xØ150)
- Convection air outlet: min700cm2 (4xØ150)

##### SPECIFICATIONS

- Available with pebbles optional ceramics wood logs
- Ionization-protected pilot-flame
- Radiographic remote controle with thermostatic mode
- Inside finishing: heat-resistant black point
- Gas/electrical connections at the left side (optional right side)

##### OPTIONS

- interior finishing: ORIGINAL (ribbed cast iron)
- Standard (steel)

##### First aid and technical support:

- support@metalfire.eu
- +32 (0)9 261 50 57

scale 1:20

www.metalfire.eu EN 613 CE

General dimensional tolerances up to 6mm  
Metalfire preserves the right to modify specifications without previous notice

Sheet  
1/3

WITHOUT FINISHING FRAME

AVENUE<sup>Patented</sup>

metalfire

Technical Document

AVENUE MF 1600-40 GHE 2SR

Prescribed insulation thickness (mm)

Combustable finishing material

Metalfire recommended  
Promasil 1100L  
(TC=0,081 W/mK)

A = 25mm

Non-combustable finishing material

non-combustable  
materials  
structural building items  
EXCLUDED e.g load bearing walls

A = 0mm

TC=thermal conductivity

TC=non-combustable

Table: AVENUE MF 1600-40 GHE 2SR

Installation dimensions (mm)

| P    | Q   | R    | S    | T   | Z  |
|------|-----|------|------|-----|----|
| 1647 | 390 | 1754 | 1750 | 416 | NA |

First aid and technical support:  
- support@metalfire.eu  
- +32 (0)9 261 50 57

scale 1:20

www.metalfire.eu

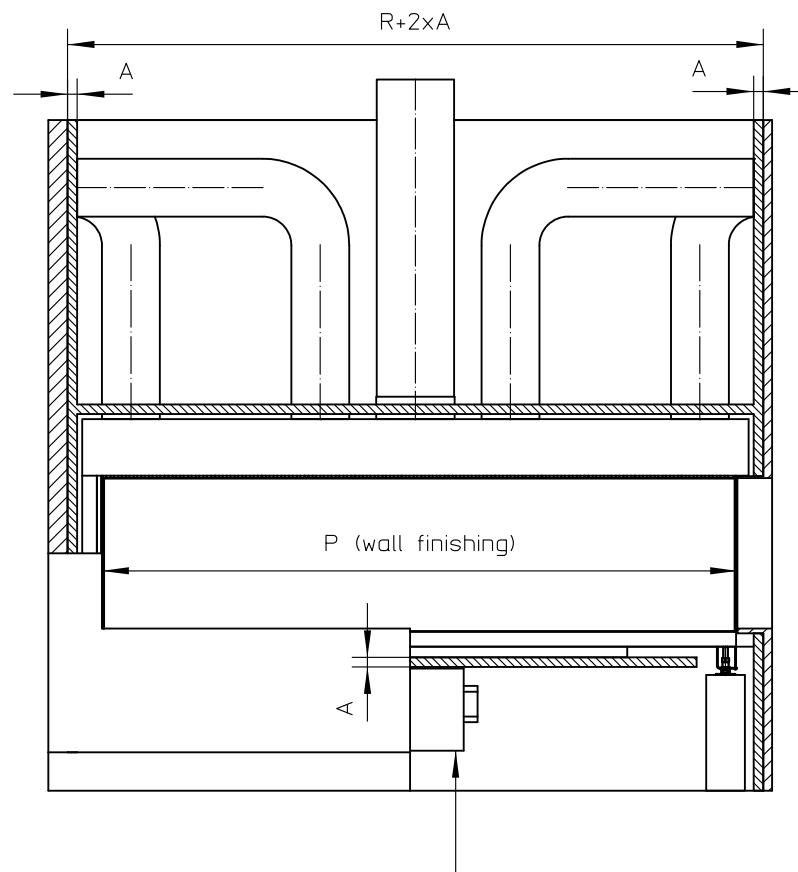
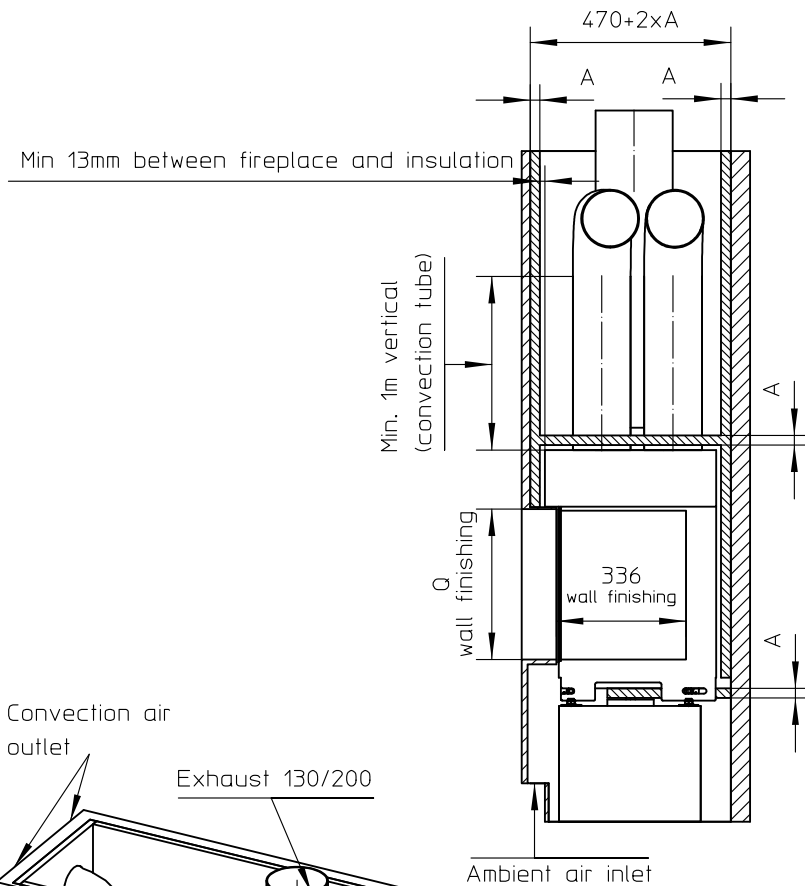
EN 613

Rev.

CE

General dimensional tolerances up to 6mm  
Metalfire preserves the right to modify specifications without previous notice

Sheet  
2/3

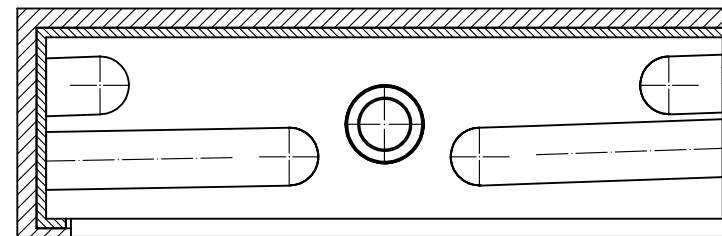
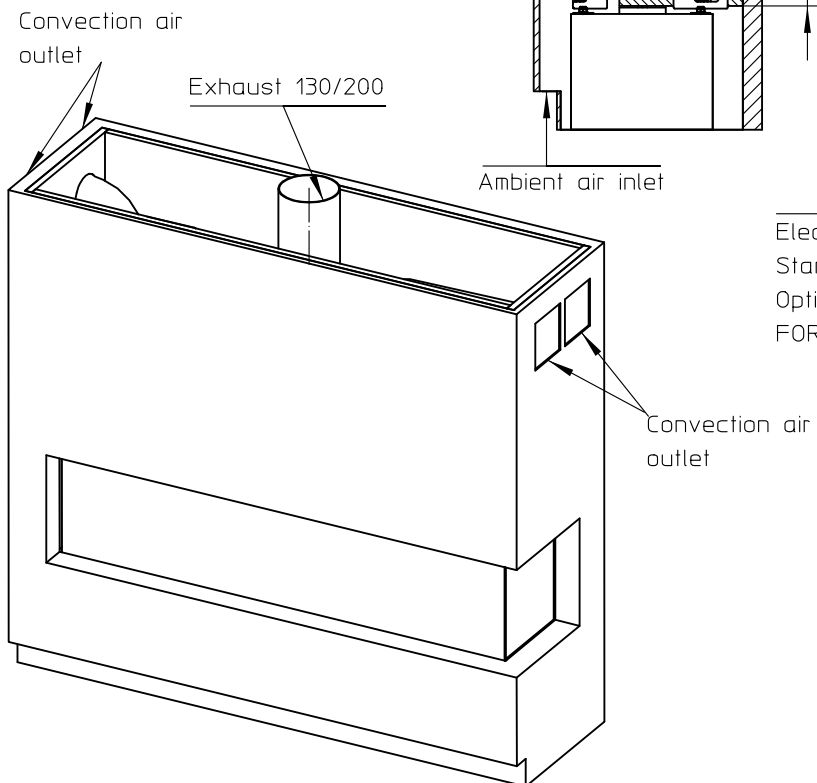


Electrical/gas control unit

Standard connected with 1m flexible tube.

Optional: connected on right side and/or with an additional 1m tube(AT ORDER)

FORESEE ENOUGH AIR FLOW FOR COOLING

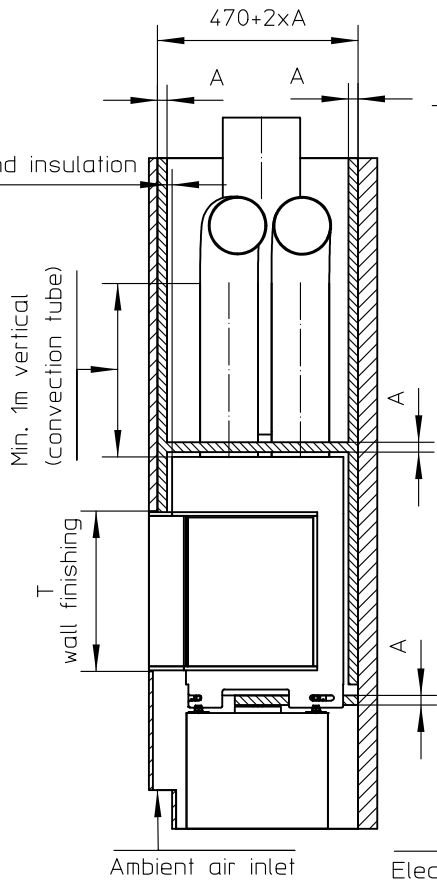


Combustable finishing material

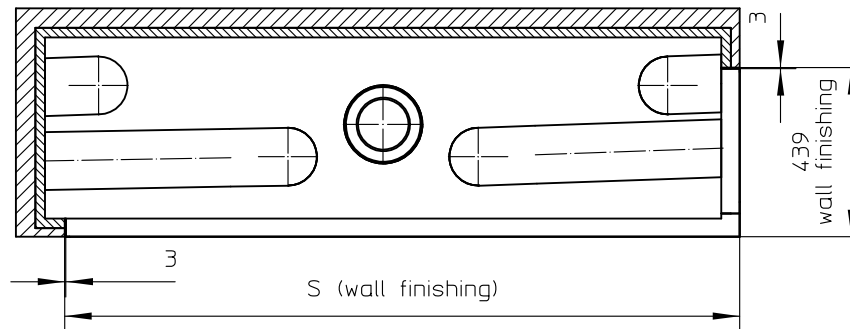
Insulation

Insulation thickness = > see table

Min 13mm between fireplace and insulation



Electrical/gas controle unit  
Standard connected with 1m flexible tube.  
Optional: connected on right side and/or with an additional 1m tube(AT ORDER)  
FORESEE ENOUGH AIR FLOW FOR COOLING



Combustable finishing material  
Insulation  
Insulation thickness = > see table

WITH FINISHING FRAME 90/10

R+2xA

# AVENUE Patented

## metalfire

### Technical Document

AVENUE MF 1600-40 GHE 2SR

Prescribed insulation thickness (mm)

Combustable finishing material

Metalfire recommended  
Promasil 1100L  
(TC=0,081 W/mK)

A = 25mm

Non-combustable finishing material

non-combustable  
materials  
structural building items  
EXCLUDED e.g load bearing walls

A = 0mm

TC=thermot conductivity

TC=non-combustable

Table: AVENUE MF 1600-40 GHE 2SR

Installation dimensions (mm)

| P    | Q   | R    | S    | T   | Z  |
|------|-----|------|------|-----|----|
| 1647 | 390 | 1754 | 1750 | 416 | NA |

First aid and technical support:  
- support@metalfire.eu  
- +32 (0)9 261 50 57

scale 1:20

Rev.

www.metalfire.eu

EN 613

CE

General dimensional tolerances up to 6mm  
Metalfire preserves the right to modify specifications without previous notice

Sheet  
3/3

Convection air outlet

Exhaust 130/200

Ambient air inlet

Convection air outlet

Gen3  
SCALE 1:25