

AVENUE SERIES

**AVENUE MF 800-75 GHE
AVENUE MF 900-60 GHE
AVENUE MF 1050-60 GHE
AVENUE MF 1050-75 GHE
AVENUE MF 1300-60 GHE**

Avenue Large MF 1300-95 GHE



**Setting the burner
Conversion to another gas type.**

1 Table of contents

1	Table of contents	2
2	Introduction	2
3	Opening the fireplace.....	3
3.1	Front of fireplace with door option	3
3.1.1	Opening the door	3
3.1.2	Removing the door.....	4
3.2	Front of fireplace with glass insert	5
3.3	Large fireplace front with glass insert	7
3.4	Corner and triangular fireplace	10
4	Dismantling the burner.....	12
5	Setting/converting the burner.....	14
6	Replacing the ceramic logs.....	16
7	Closing the fireplace again	21
7.1	Front of fireplace with door option	21
7.2	Front of fireplace with glass insert	23
7.3	Large fireplace front with glass insert	25
7.4	Corner and triangular fireplace	27

2 Introduction

THIS DOCUMENT IS ONLY INTENDED FOR INTERNAL USE

This document covers the (re)setting of the burner and conversion to another gas type.

Applicable appliances:

AVENUE MF 800-75 GHE
AVENUE MF 900-60 GHE
AVENUE MF 1050-60 GHE
AVENUE MF 1050-75 GHE
AVENUE MF 1300-60 GHE

AVENUE LARGE MF 1300-95 GHE

It is very important that this gas fireplace is only set by a qualified Metalfire fitter according to national and/or local regulations.

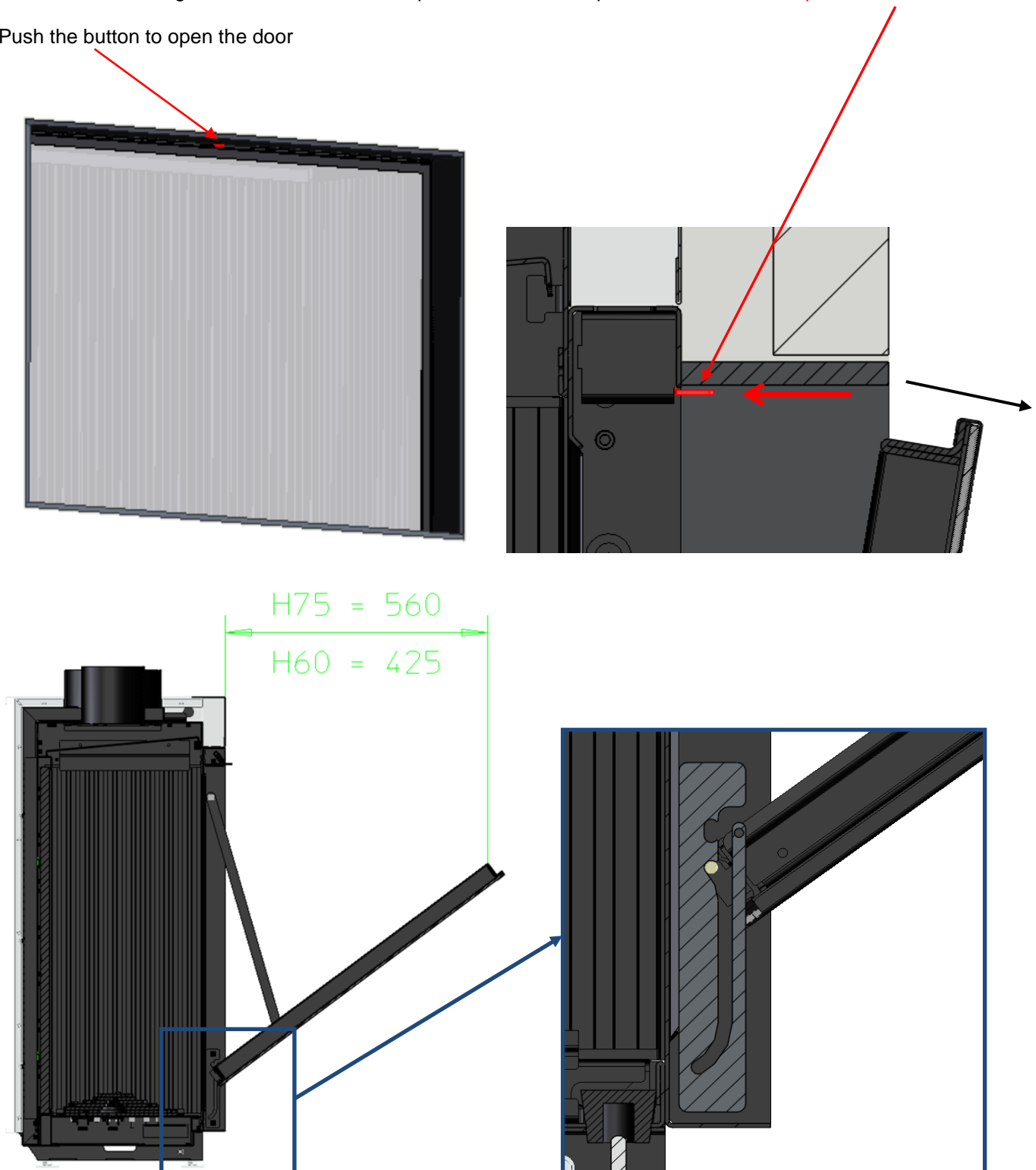
3 Opening the fireplace

3.1 Front of fireplace with door option

3.1.1 Opening the door

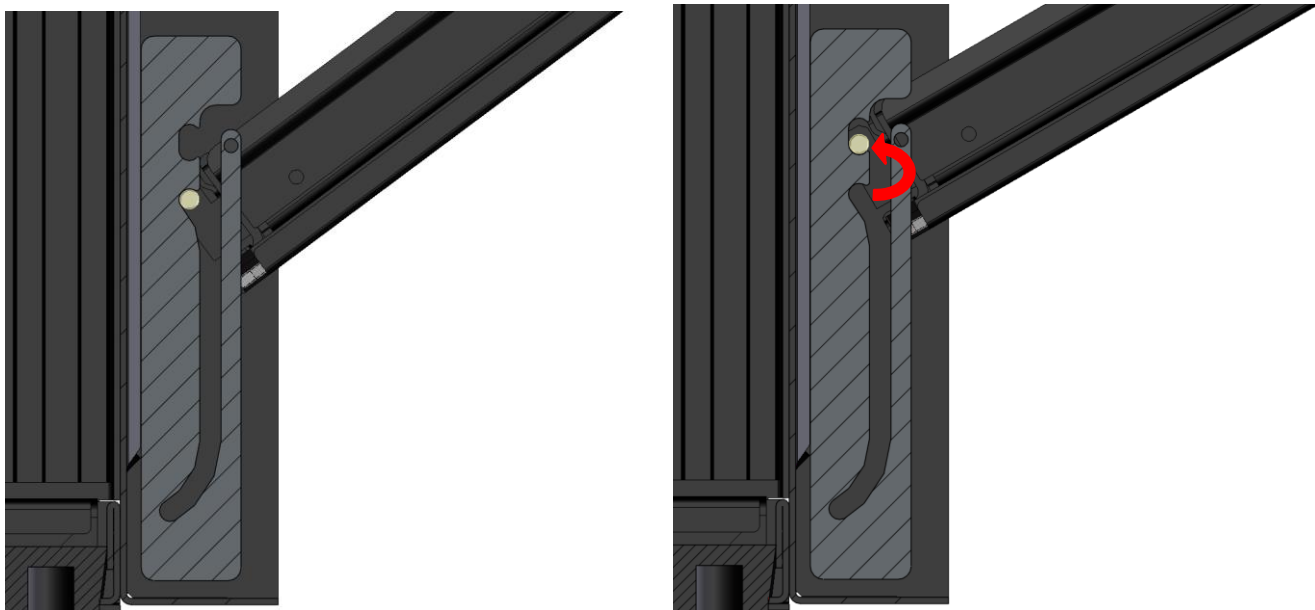
The door structure consists of a metal frame in which a ceramic pane of glass is fitted. At the bottom of the door frame, there are hinges that allow the door to open to 53°. At the top of the door there is a **pushbutton latch**.

Push the button to open the door

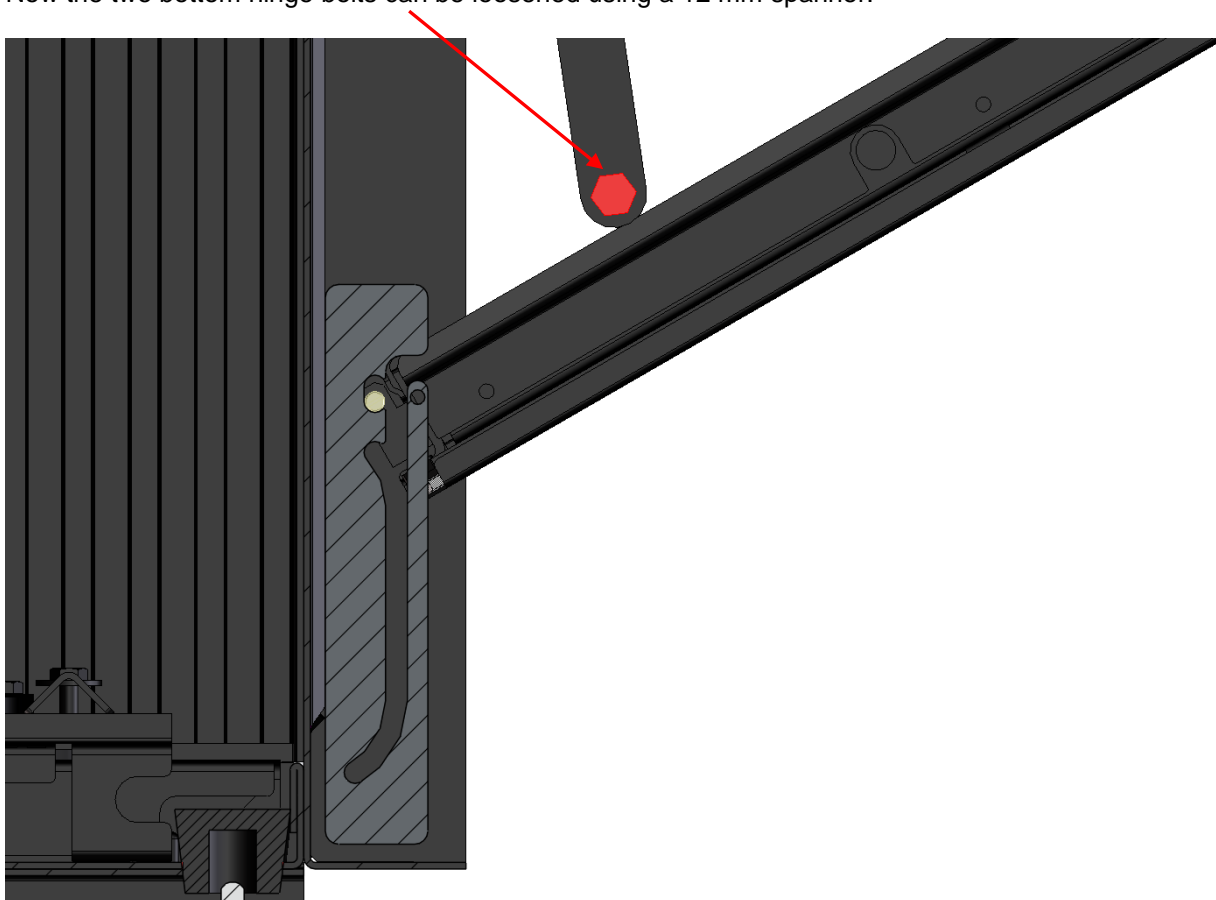


3.1.2 Removing the door

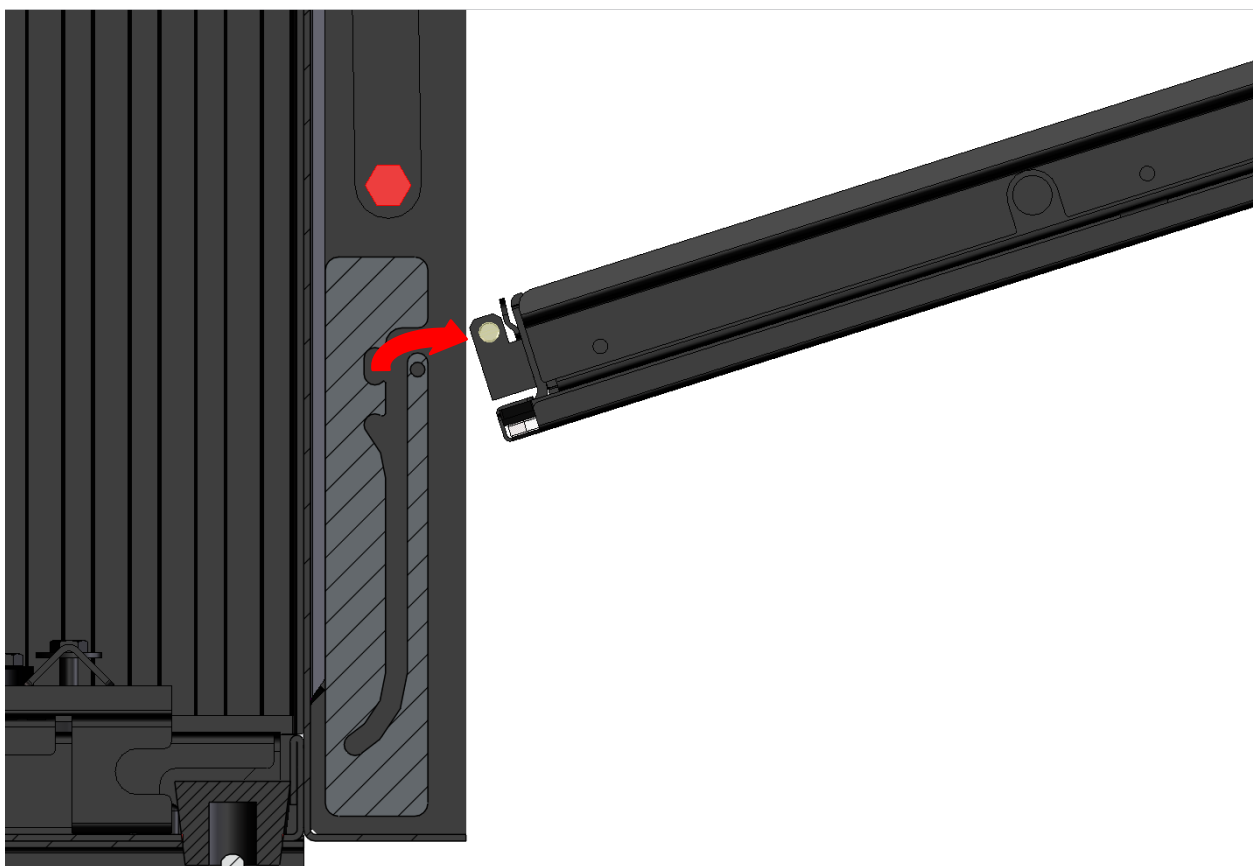
Once the door is open, it can be placed in the slot above by lifting it from underneath.



Now the two bottom hinge bolts can be loosened using a 12 mm spanner.



The door can then be removed



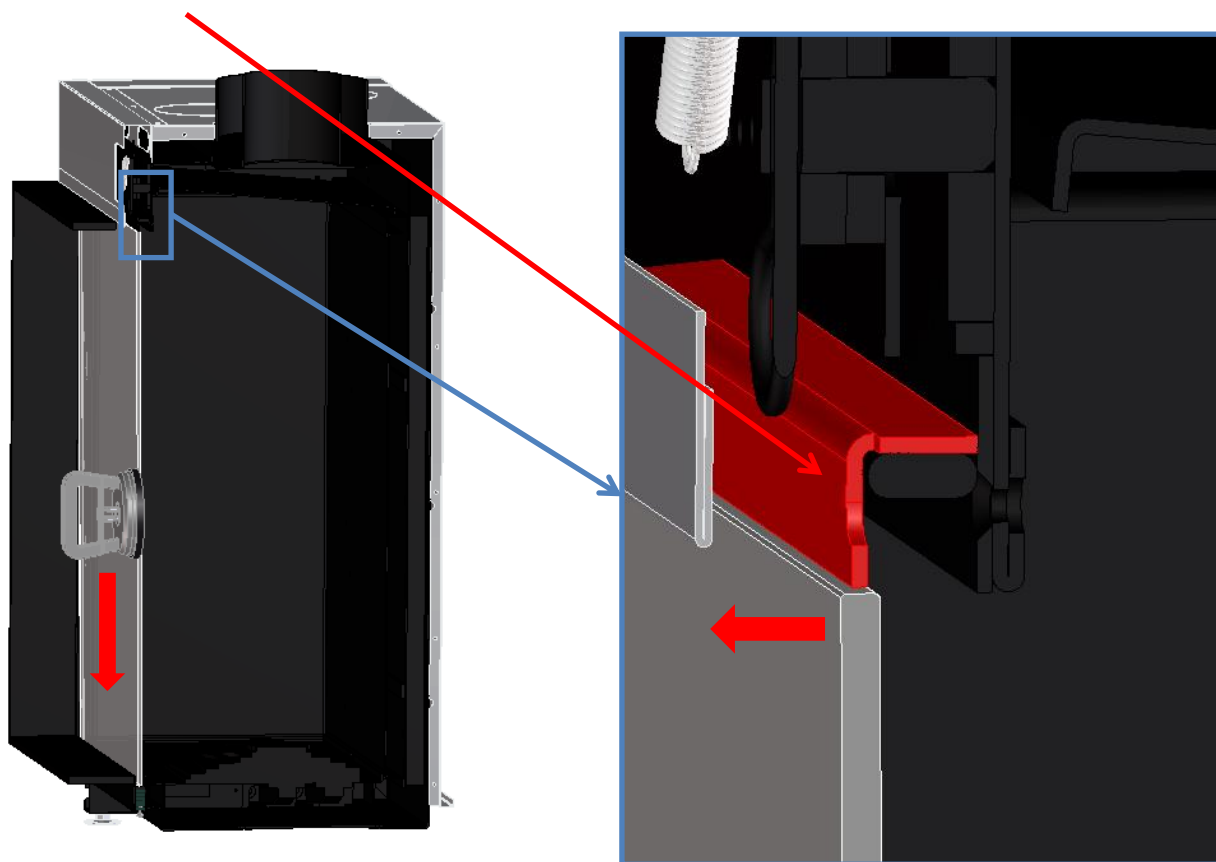
3.2 Front of fireplace with glass insert

Place the supplied suction cup in the middle of the glass. Make sure that the suction cup is properly attached.

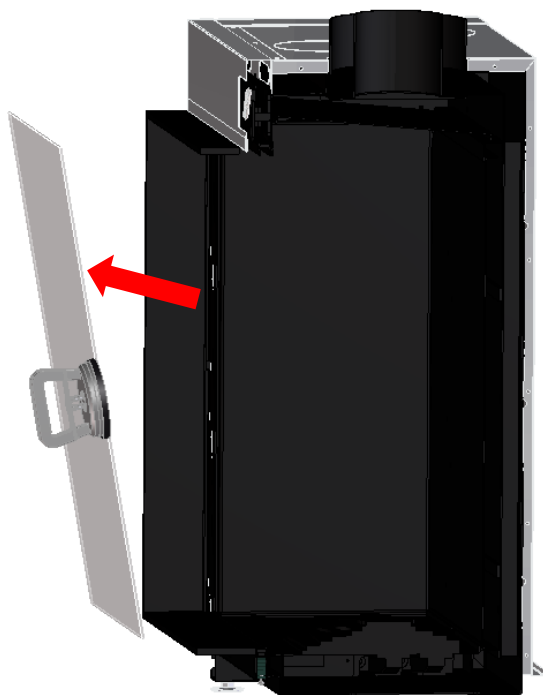
At the top of the fireplace, there is a lever concealed in the convection opening. The side closures will be shifted if the lever is moved in an anticlockwise direction.



Then push the glass using the suction cup far enough downwards so that the top of the pane is released from the seal groove.



The glass can then be taken out of the fireplace.

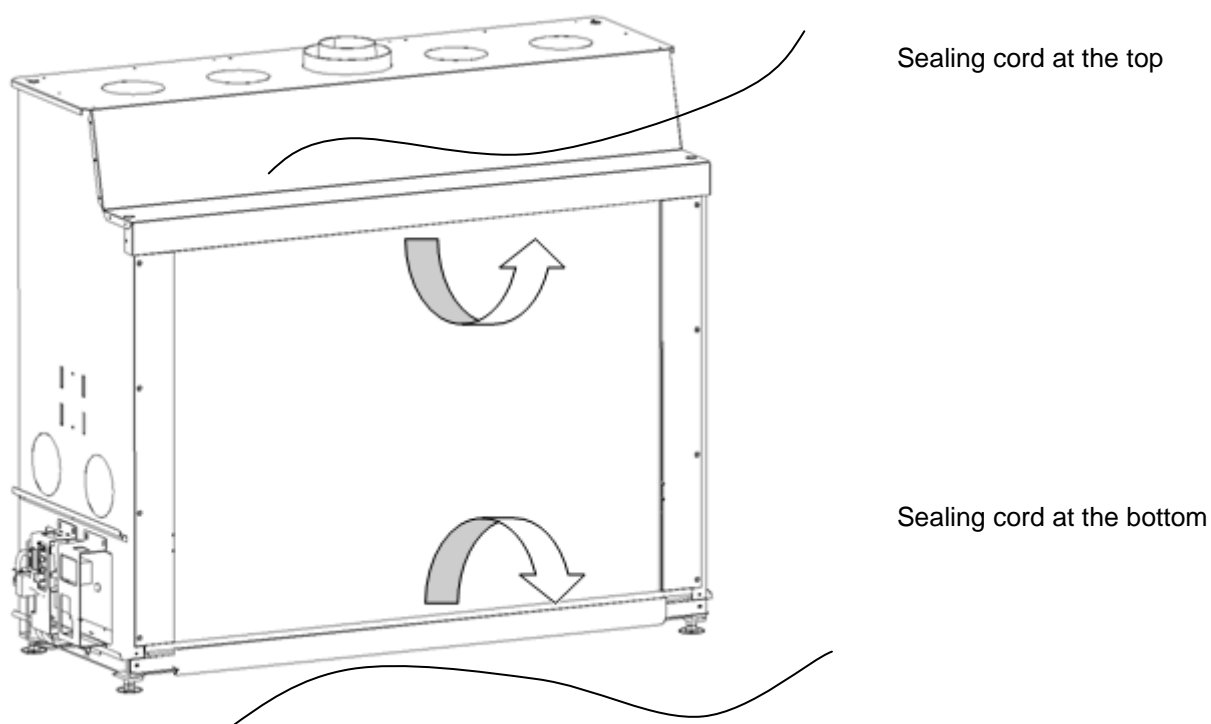


3.3 Large fireplace front with glass insert

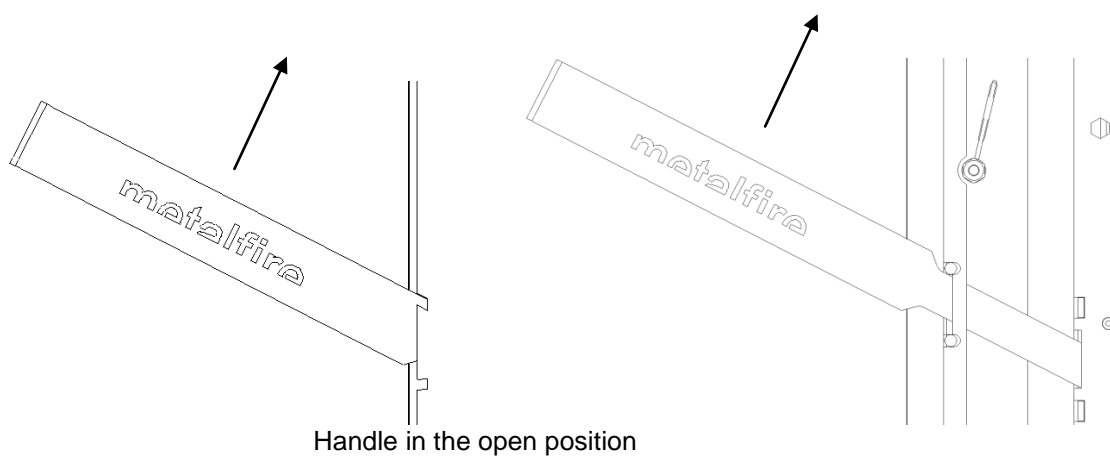
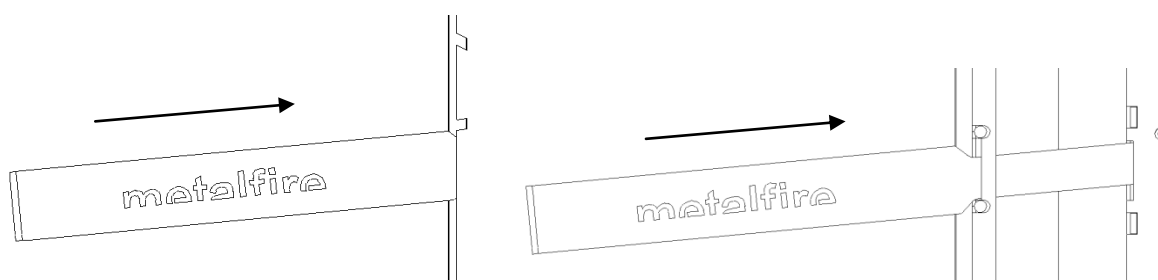
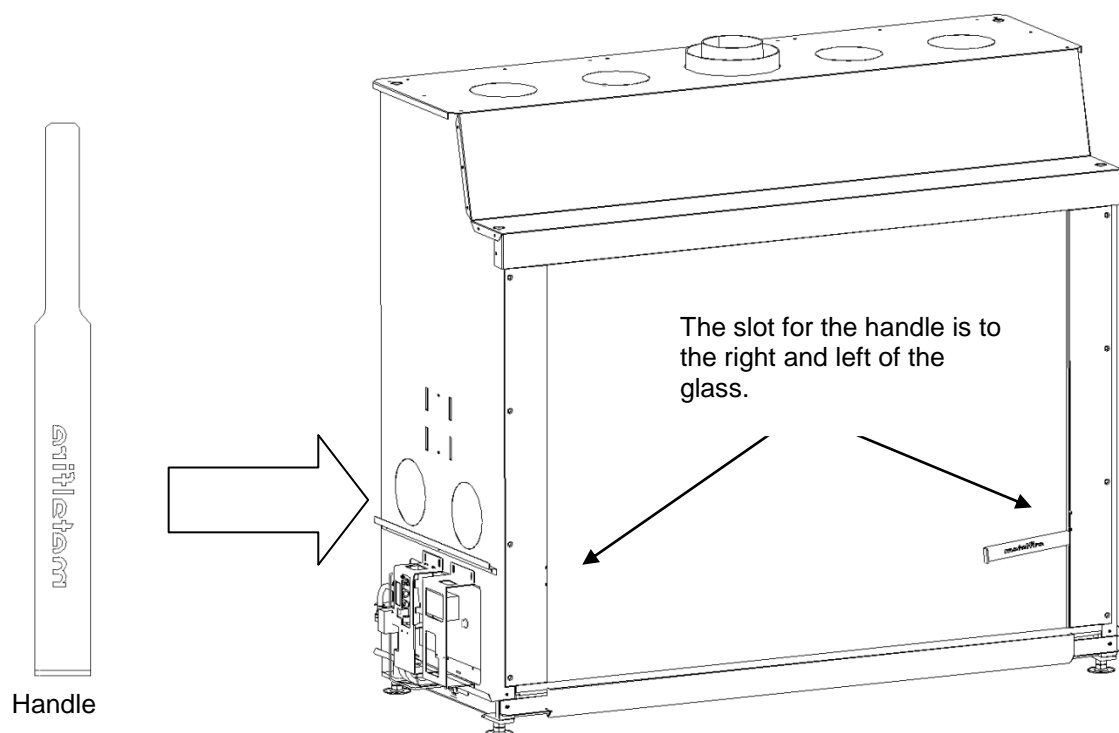
The fireplace glass can be removed using the suction cups supplied and the handle for the sealing system.



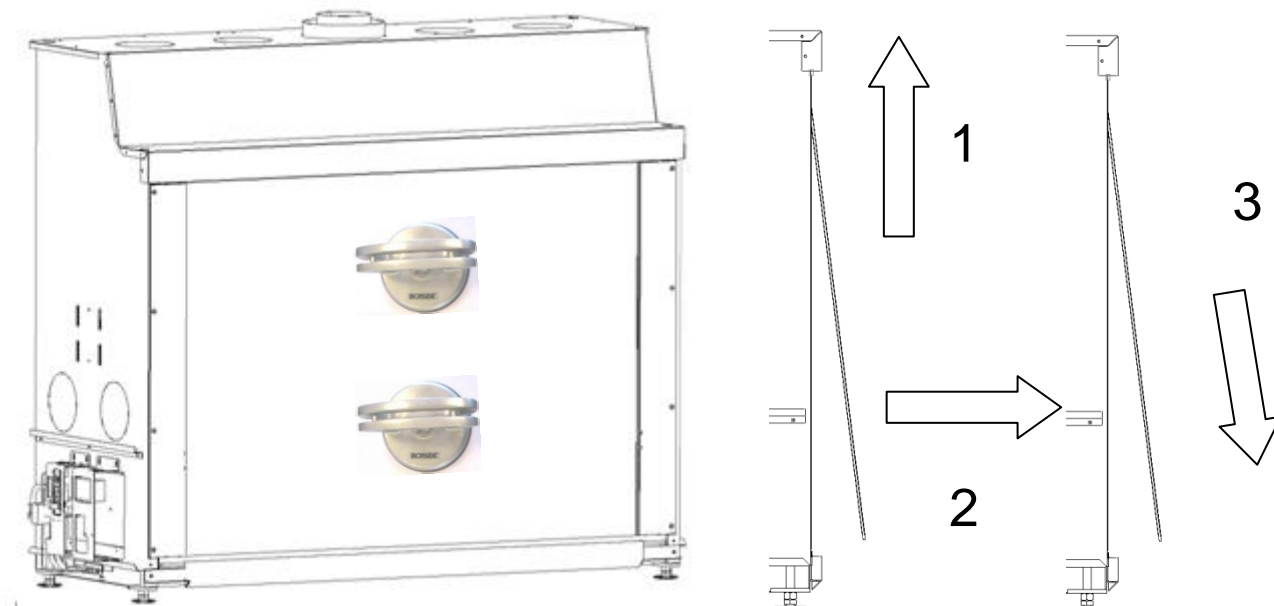
Before the glass can be removed from the apparatus, the sealing cord at the top and bottom of the glass must be removed by taking it out of the slots.



Release the seal on both sides of the glass using the handle supplied. To the left and right of the glass is an opening for the handle. First release the right seal and then the left one, or vice-versa, by lifting up the door handle (see the figure at the bottom). Remove the handle.



Prepare a safe place near the fire to put the glass after it has been removed. Put the suction cups supplied in the middle of the door glass under each other. It is easiest to place the handles horizontally.



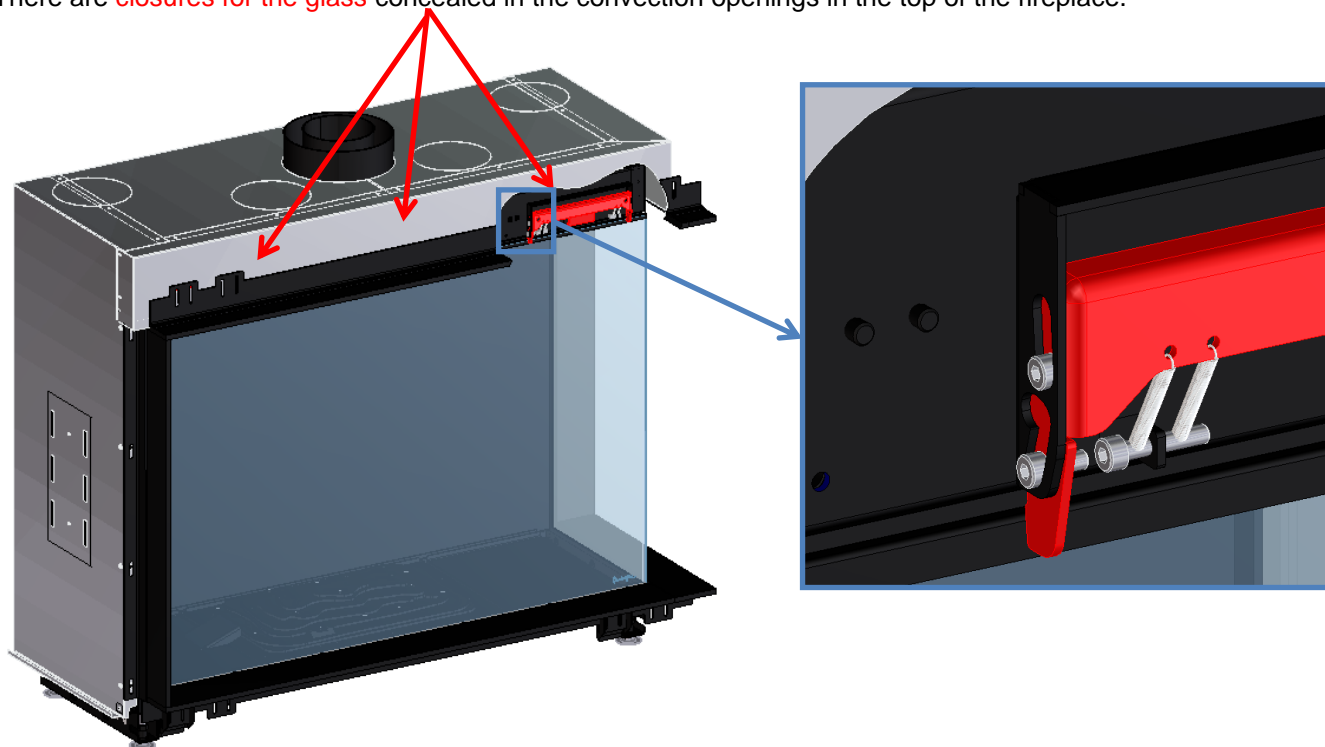
Lift the glass as far as it will go (1) and then turn it towards you (2). Lower the glass (3) until it can be removed from the opening of the fire.

Place the glass in a safe place near the fire.

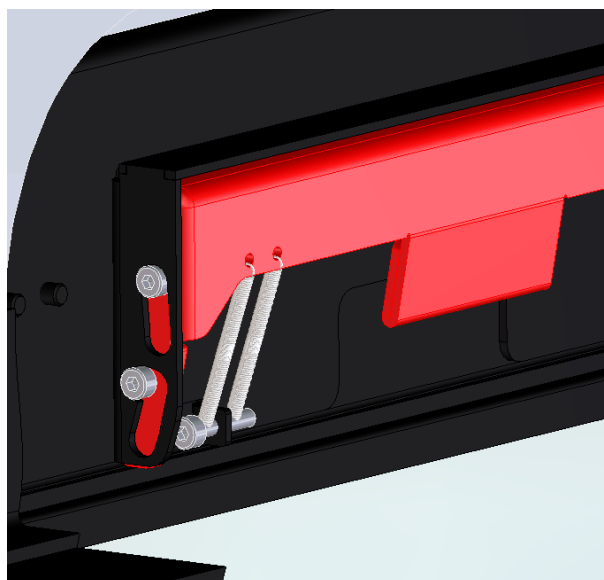
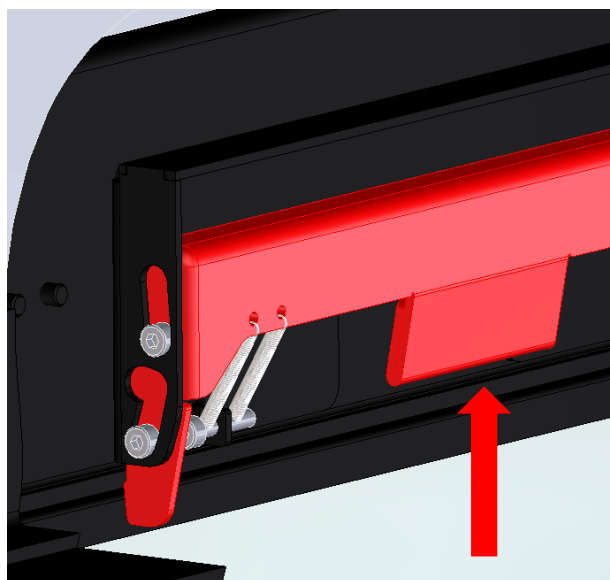
3.4 Corner and triangular fireplace

Place the supplied suction cups in the middle of the glass. Make sure that the suction cup is properly attached.

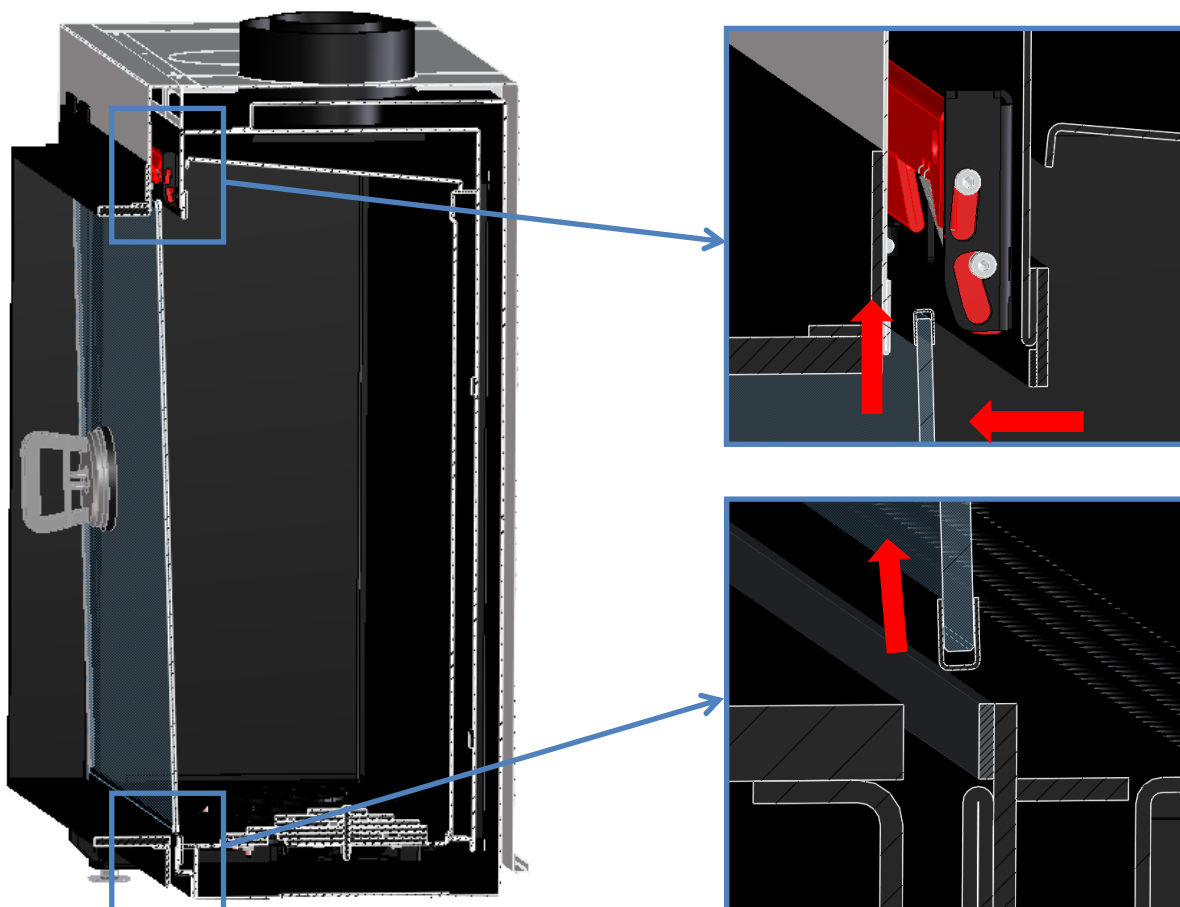
There are **closures for the glass** concealed in the convection openings in the top of the fireplace.



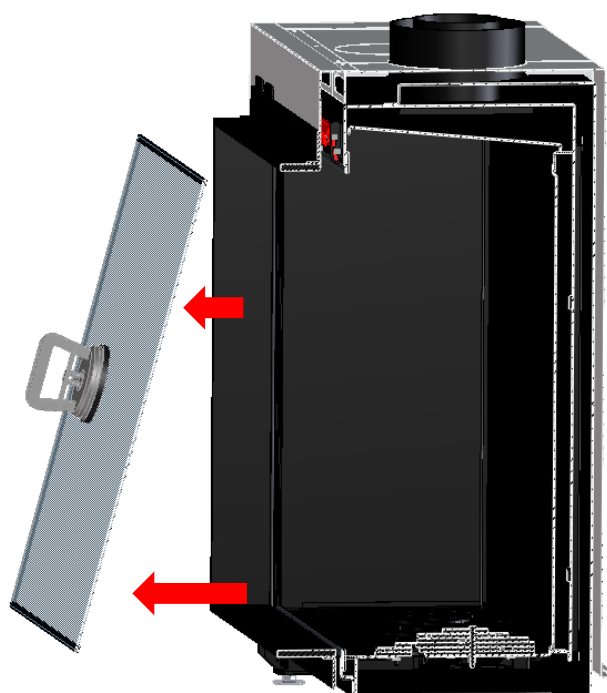
Once the supplied suction cups have been attached to the glass, these closures can be unlatched by pushing them upwards. The closures click into the unlocked position.



To remove the glass from the appliance, the glass must first be tilted slightly forwards at the top, and then lifted enough so that it is released from the seal joint underneath.



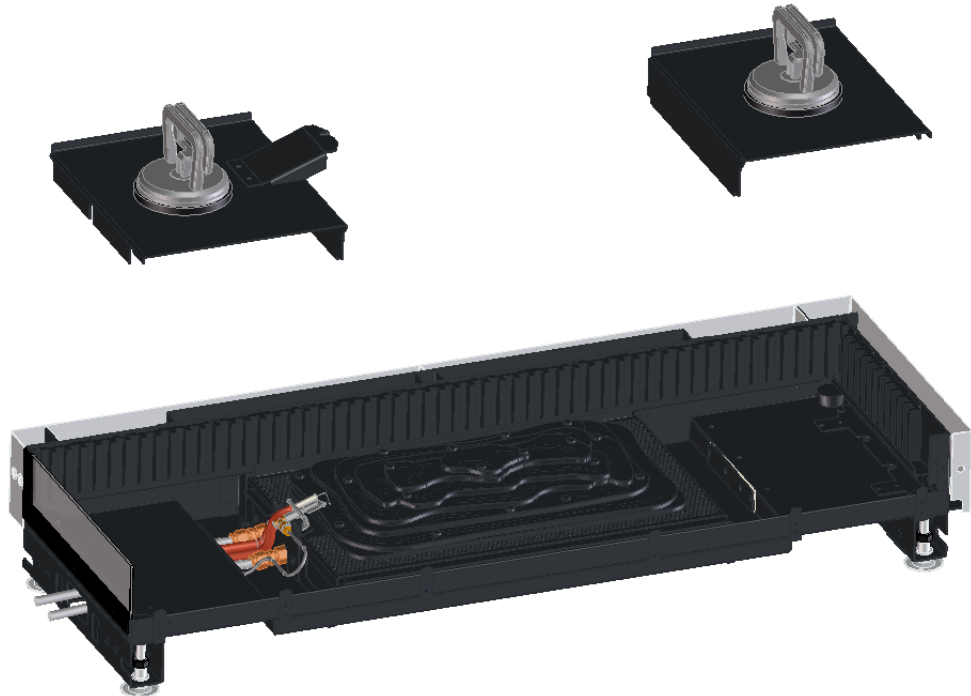
Now the glass can be tilted forwards at the bottom and removed from the fireplace.



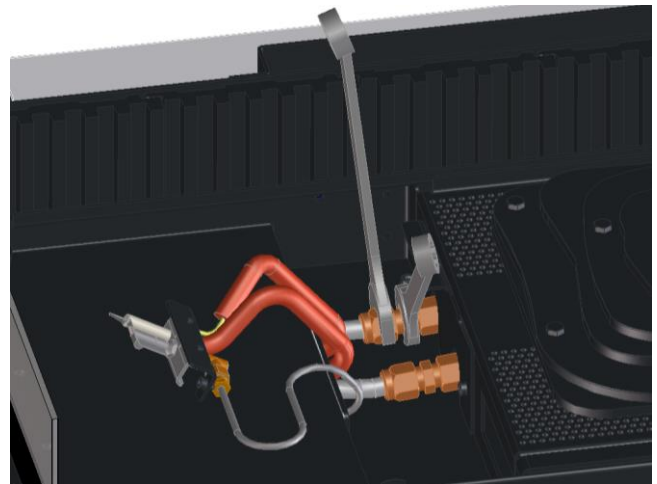
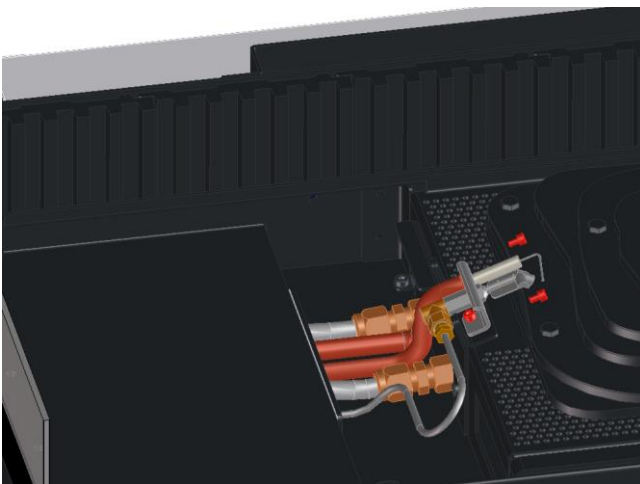
4 Dismantling the burner

After that **carefully** remove the logs and vermiculite granules.

Using the supplied suction cup, lift the two plates to the left and right of the burner unit out of the appliance.



Now unscrew the pilot light and fold it to the side so that the compression fittings on the burner unit can be accessed. Undo the compression fittings using a size 17 and 19 spanner size.



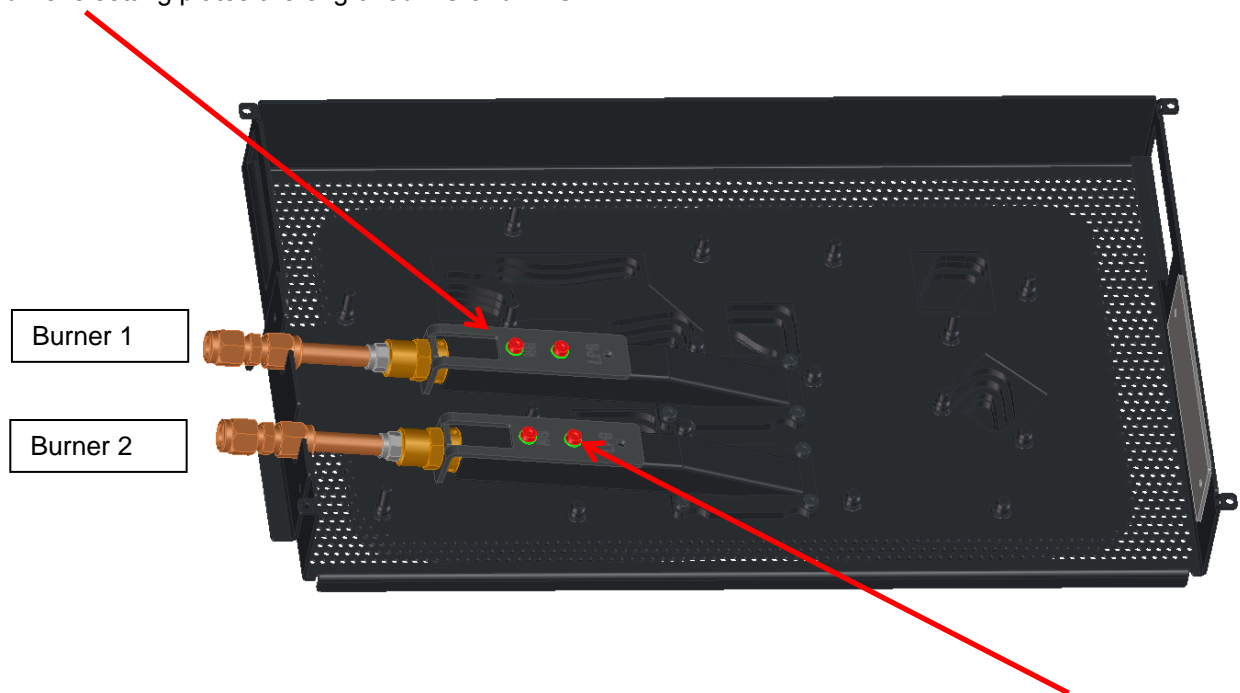
The burner can be removed from the appliance after the four screws at the bottom of the burner have been unscrewed.



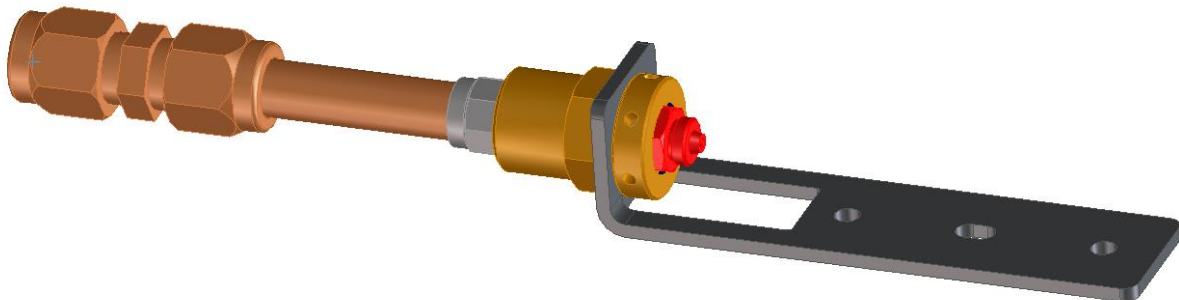
After that, the bottom plate can be dismantled so that the area under the burner and the controls can be accessed, if necessary.

5 Setting/converting the burner

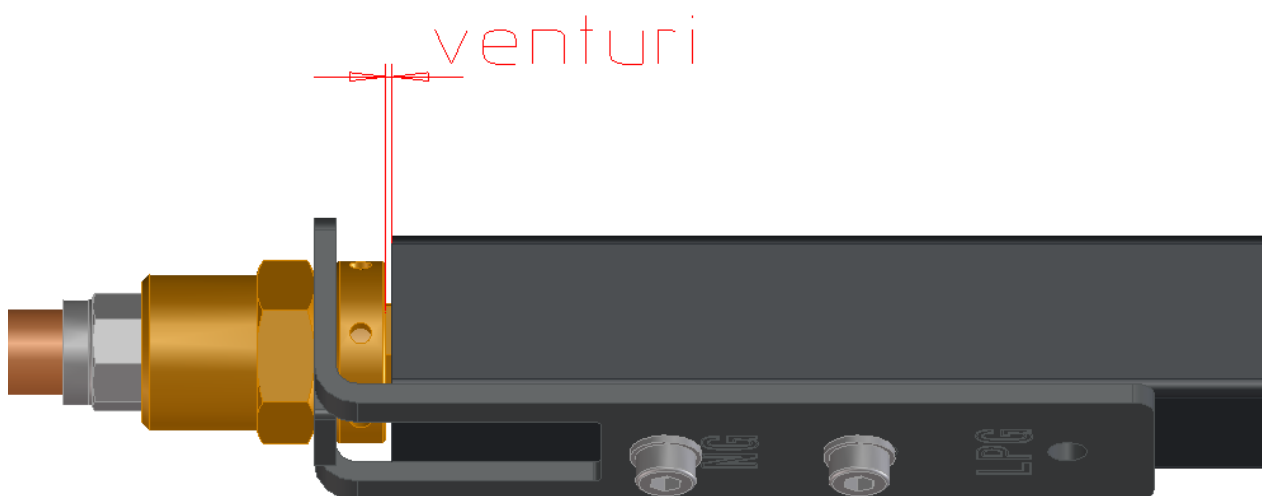
If one turns the burner upside down the Venturi units become visible.
The burner's setting plates are engraved NG and LPG



To convert an appliance for another gas type, undo the setting plates by removing the screws.

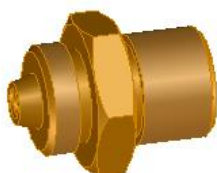


The nozzle can now be replaced and the Venturi put in the correct position.

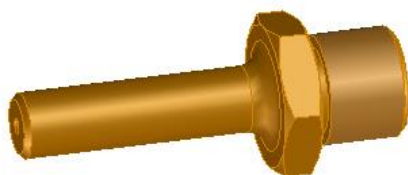


Nozzles and Venturi settings avenue appliances

	High-caloric natural gas			Low-caloric natural gas		
	burner 1	burner 2	Venturi	burner 1	burner 2	Venturi
Avenue 800-75	Ø 2.0 mm	Ø 1.7 mm	1 mm	Ø 2.0 mm	Ø 1.7 mm	0 - 0.5 mm
Avenue 900-60	Ø 2.0 mm	Ø 1.7 mm	1 mm	Ø 2.0 mm	Ø 1.7 mm	0 - 0.5 mm
Avenue 1050-60	Ø 2.0 mm	Ø 2.0 mm	1 mm	Ø 2.0 mm	Ø 2.0 mm	0 - 0.5 mm
Avenue 1050-75	Ø 2.0 mm	Ø 2.0 mm	1 mm	Ø 2.0 mm	Ø 2.0 mm	0 - 0.5 mm
Avenue 1300-60	Ø 2.0 mm	Ø 2.0 mm	1 mm	Ø 2.0 mm	Ø 2.0 mm	0 - 0.5 mm
avenue Large 1300-95	Ø 2.25 mm	Ø 2.25 mm	1 mm	Ø 2.25 mm	Ø 2.25 mm	1 - 0.5 mm



Nozzle natural gas G20-G25



Nozzle LPG G30-G31

	LPG		
	burner 1	burner 2	Venturi
Avenue 800-75	Ø 1,35 mm	Ø 1,15 mm	30 mm
Avenue 900-60	Ø 1,35 mm	Ø 1,15 mm	30 mm
Avenue 1050-60	Ø 1,35 mm	Ø 1,15 mm	30 mm
Avenue 1050-75	Ø 1,35 mm	Ø 1,15 mm	30 mm
Avenue 1300-60	Ø 1,35 mm	Ø 1,15 mm	30 mm
avenue Large 1300-95	Ø 1.35 mm	Ø 1.15 mm	30 mm

Reassemble the burner after fitting the correct nozzle

6 Replacing the ceramic logs

Ensure that nothing ends up on or in the pilot light, and between the ignition and thermocouple pins when positioning the wooden logs and vermiculite granules.

Make sure that no material ends up on the door seal or seal groove when putting the vermiculite granules into the fireplace.

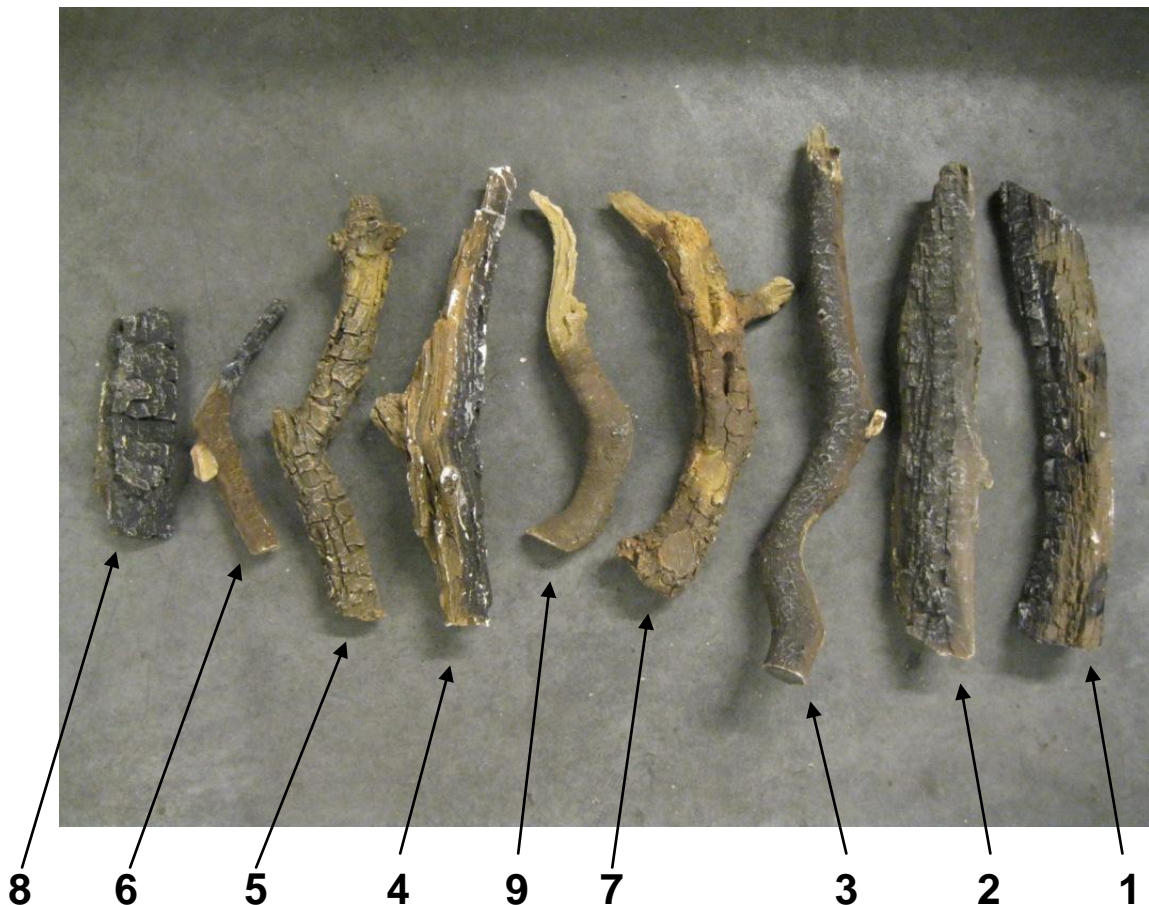
If necessary, clean the seal before closing the door or putting the glass back.

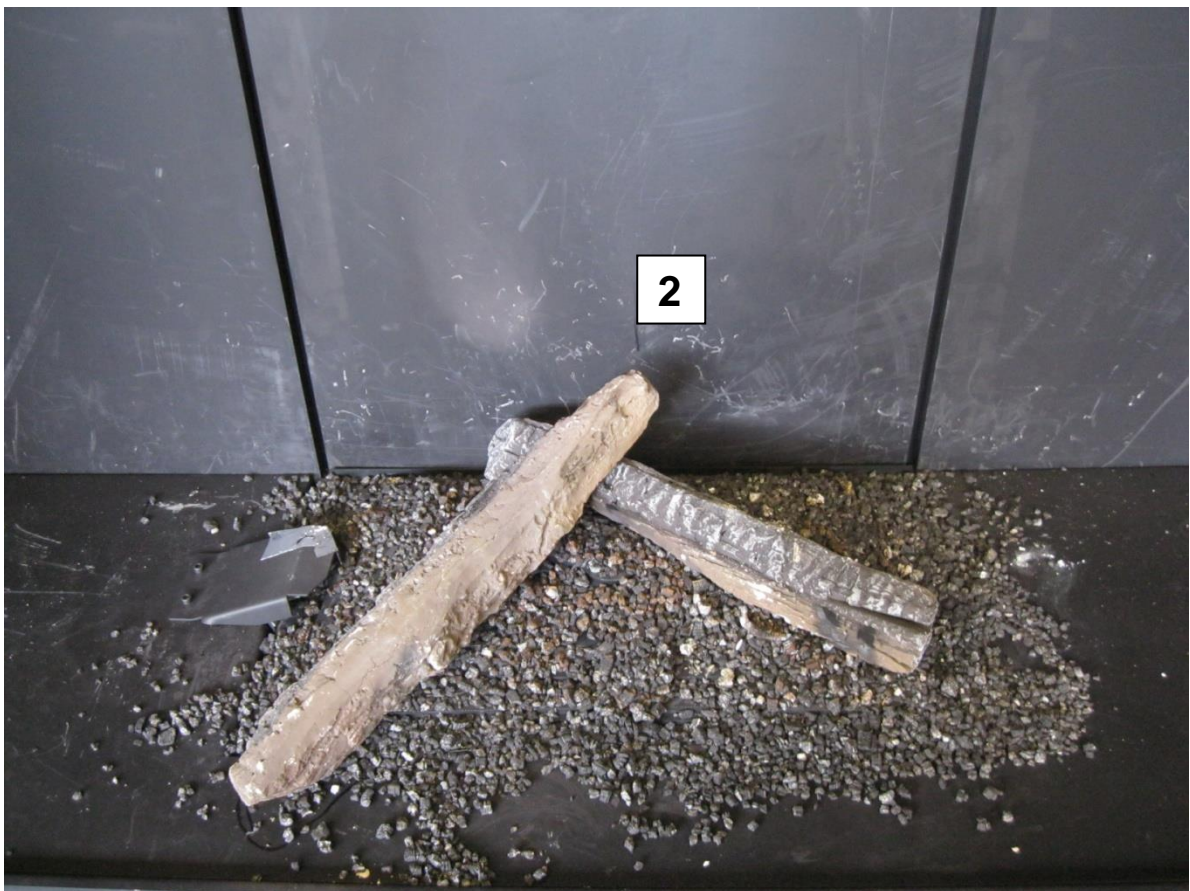
Do not change the supplied quantities of materials!

Cover the burner surface and the base plates with the supplied vermiculite granules and woodchips.

Place and stack the ceramic logs in the order and positions as shown in the photos below. The log sets consist of numbered logs as shown in the photos below. The numbering is drawn up according to the stacking order.

Place and stack the ceramic logs in the order and positions as shown in the photos below.







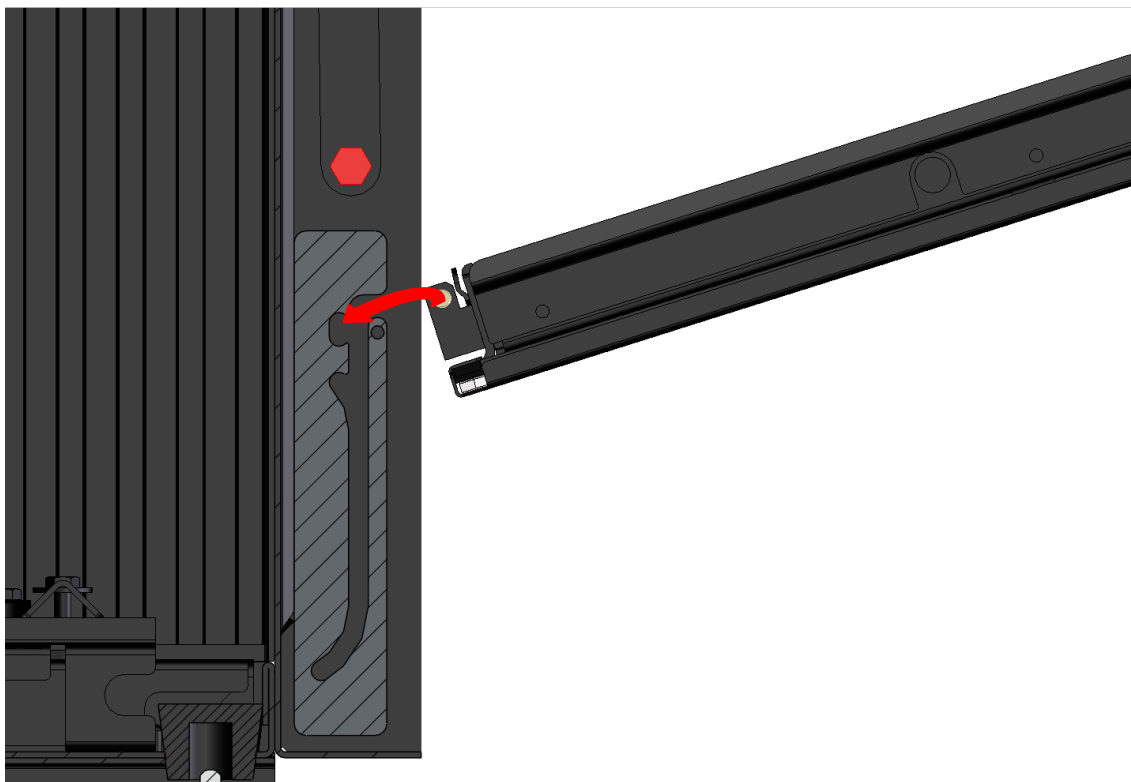




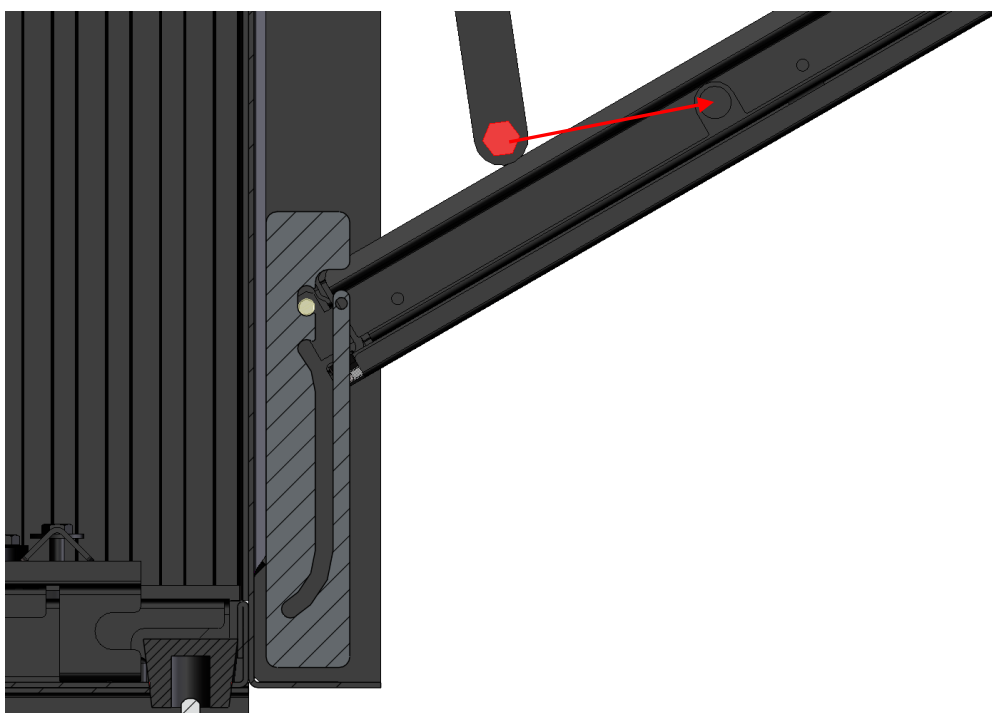
7 Closing the fireplace again

7.1 Front of fireplace with door option

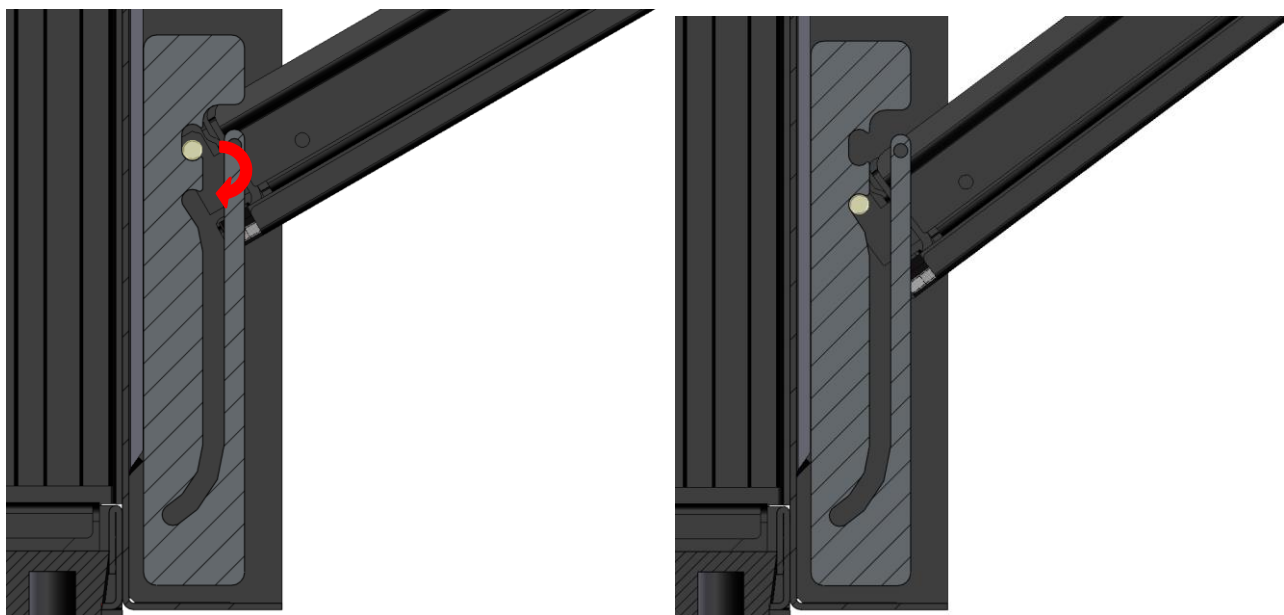
To replace the door, insert the door with the hinge pins back in the openings at the bottom.



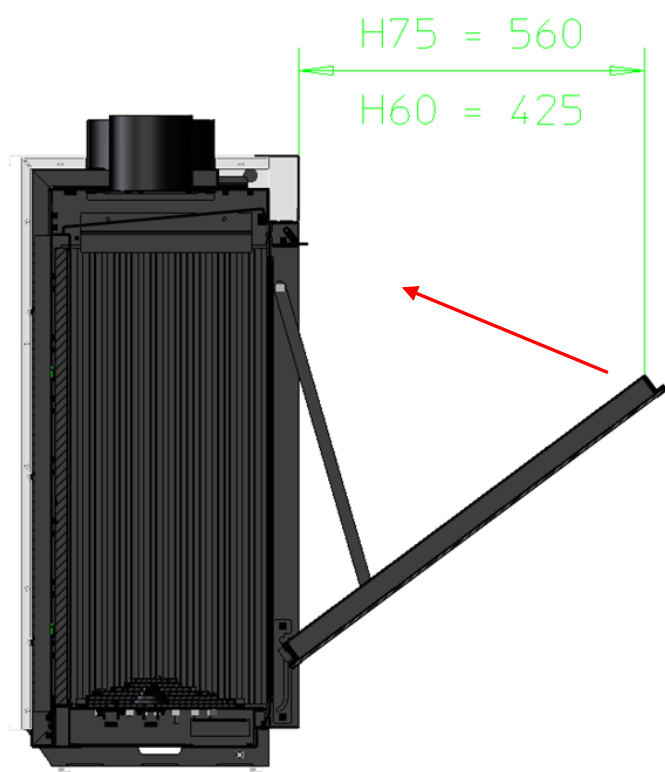
Tighten the two bottom hinge bolts using a 12 mm spanner.



Once the door levers have been fastened again, it can be placed in the slot below by lifting it from underneath.



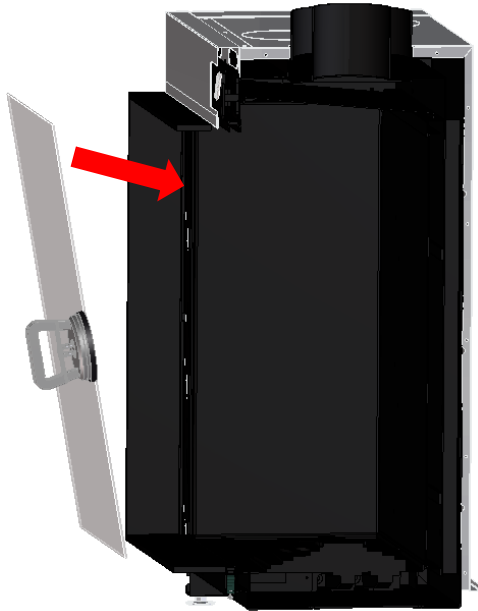
The door can now be pushed shut again.



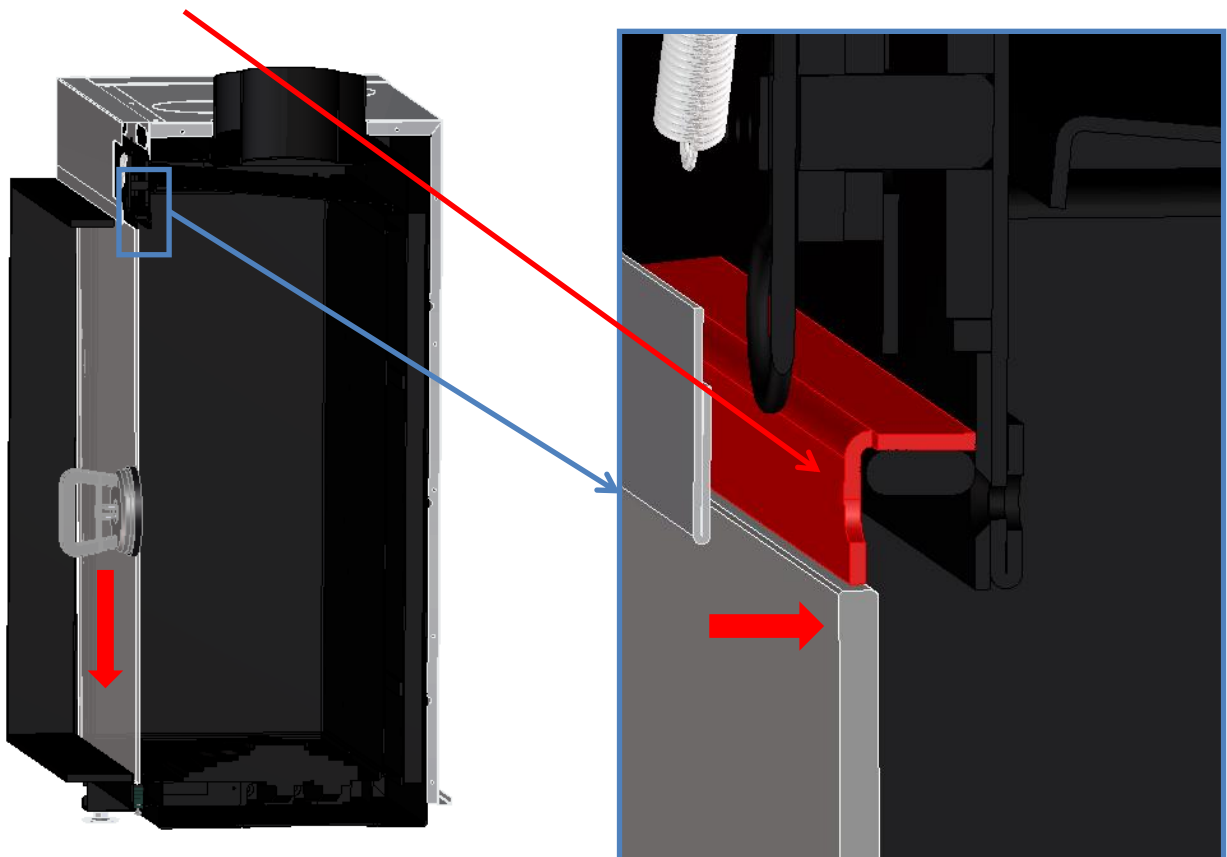
7.2 Front of fireplace with glass insert

Place the supplied suction cup in the middle of the glass. Make sure that the suction cup is properly attached.

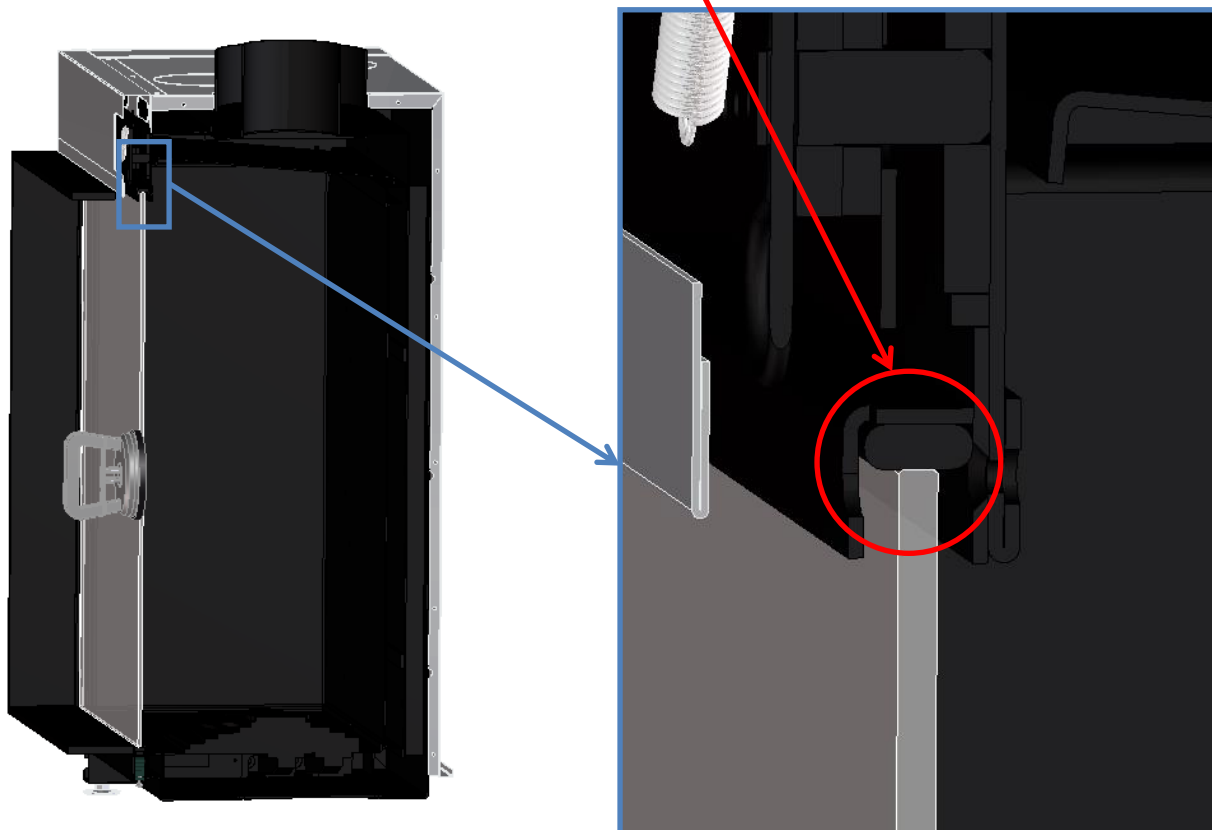
Place the glass at the bottom back in the fireplace.



Then push the pane using the suction cup far enough downwards so the top of the pane can fit on the **seal groove**.



When putting the glass back, make sure that the glass is in the middle of the seal. This will ensure that the fireplace is properly sealed.

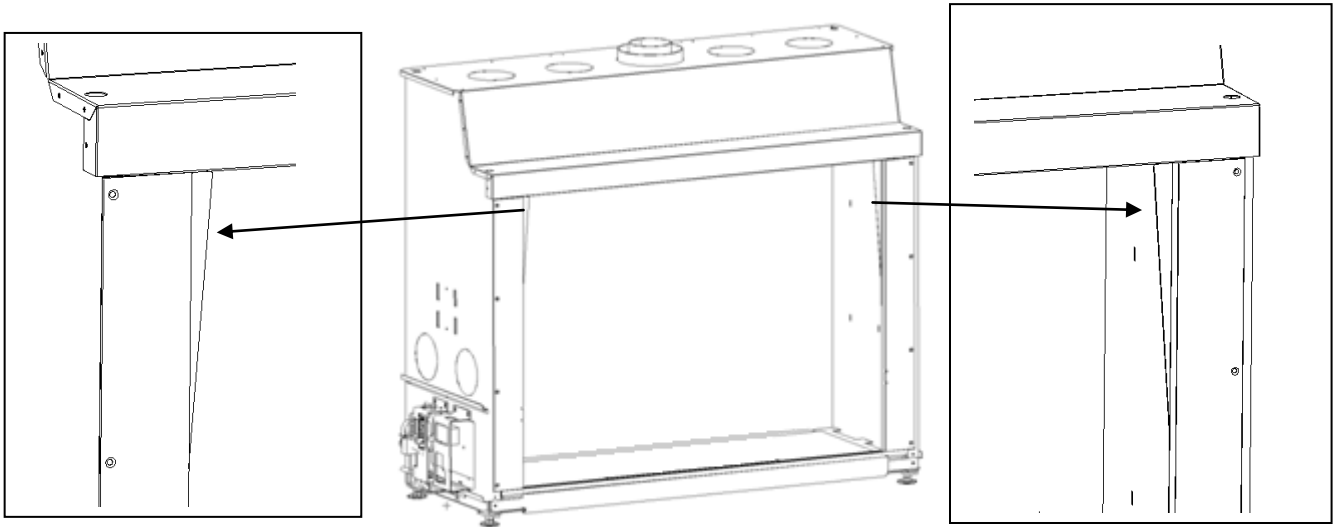


Close the fireplace again by turning the lever at the top clockwise. The side closures are then closed.

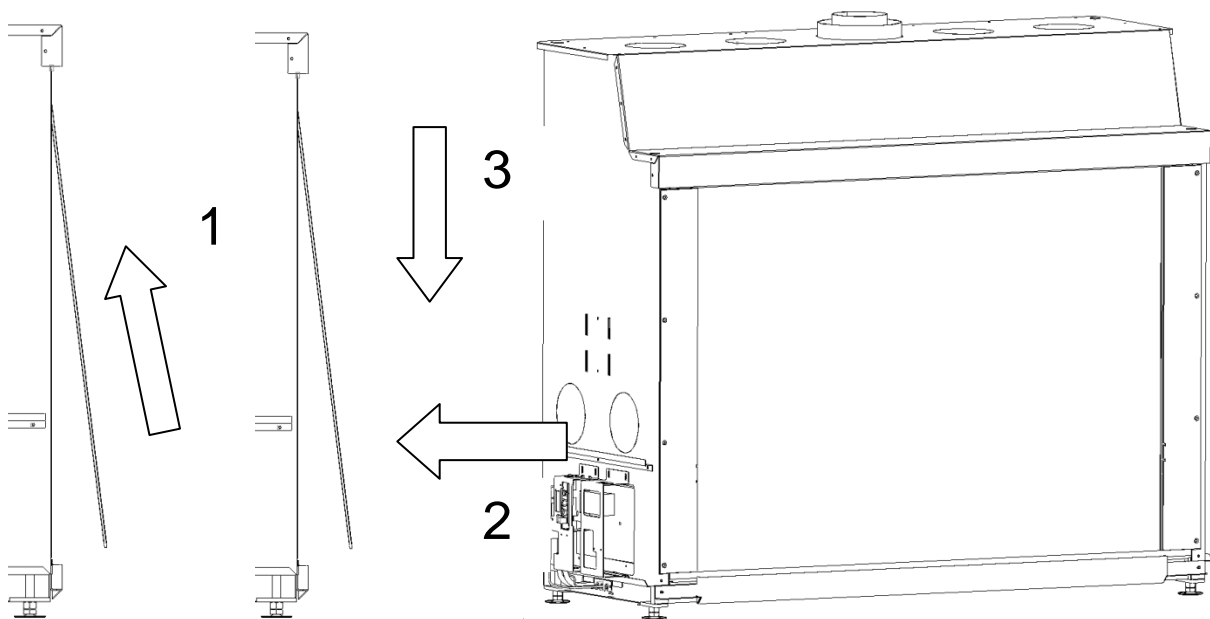


7.3 Large fireplace front with glass insert

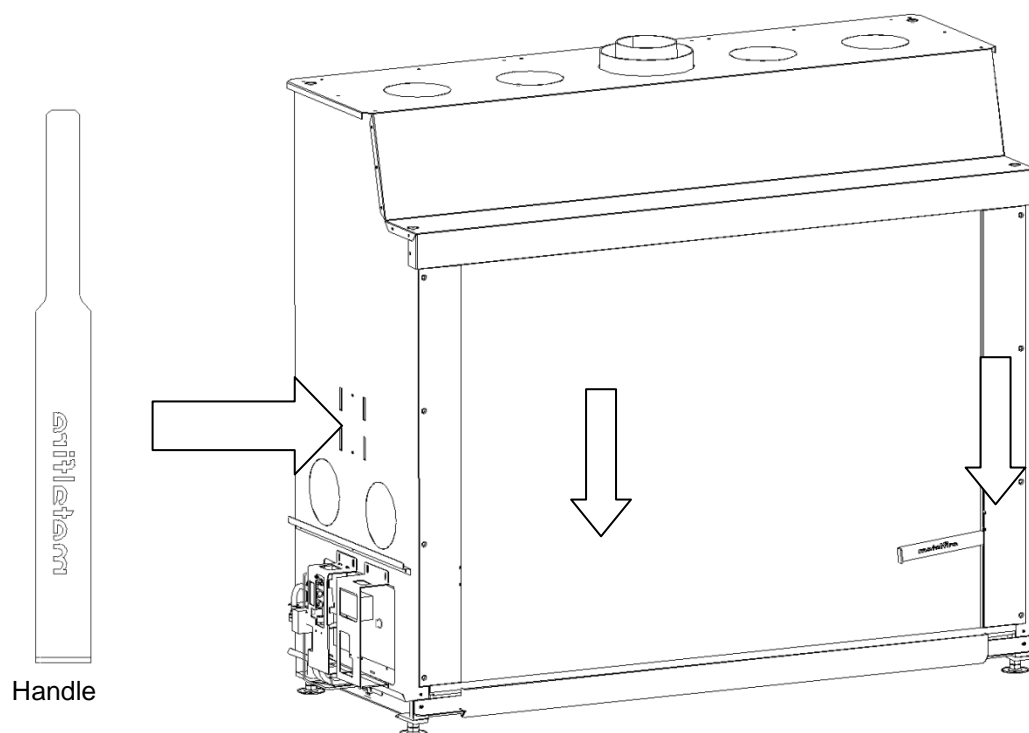
When fitting the door glass, ensure that the 2 supplied glass supports are turned inwards. If this is not the case, use the handle to raise the left and right seal (see page 40).



Fit the glass to the fireplace using the suction cups. Use the supports to the left and right at the top in the fireplace to support the glass when fitting.

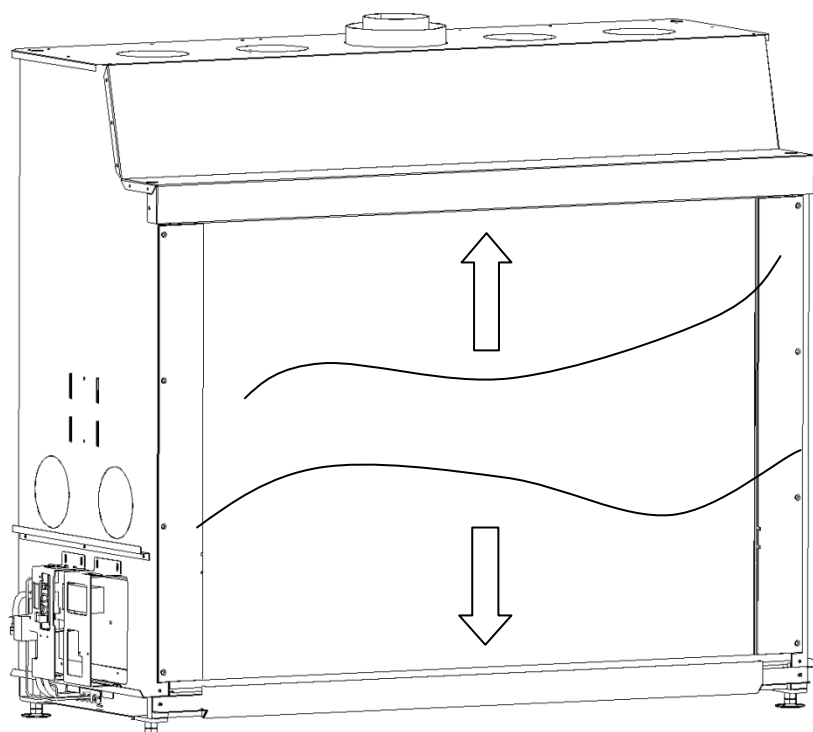


Fit the glass into the slot at the top against the seal, then lift it as high as possible (1). Turn the glass towards the inside of the fire (2) and lower it into the slot provided at the bottom (3).



Press the seal to the left and right of the glass down using the handle until the glass supports at the top on the left and right have been completely folded. Remove the handle.

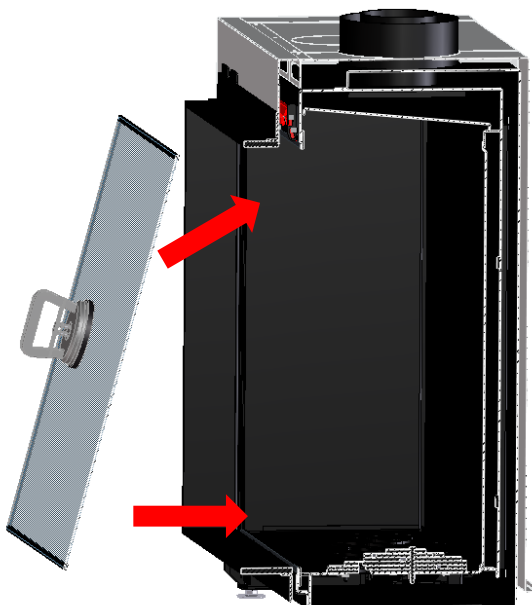
Replace the sealing cords into the groove above and below the fire.



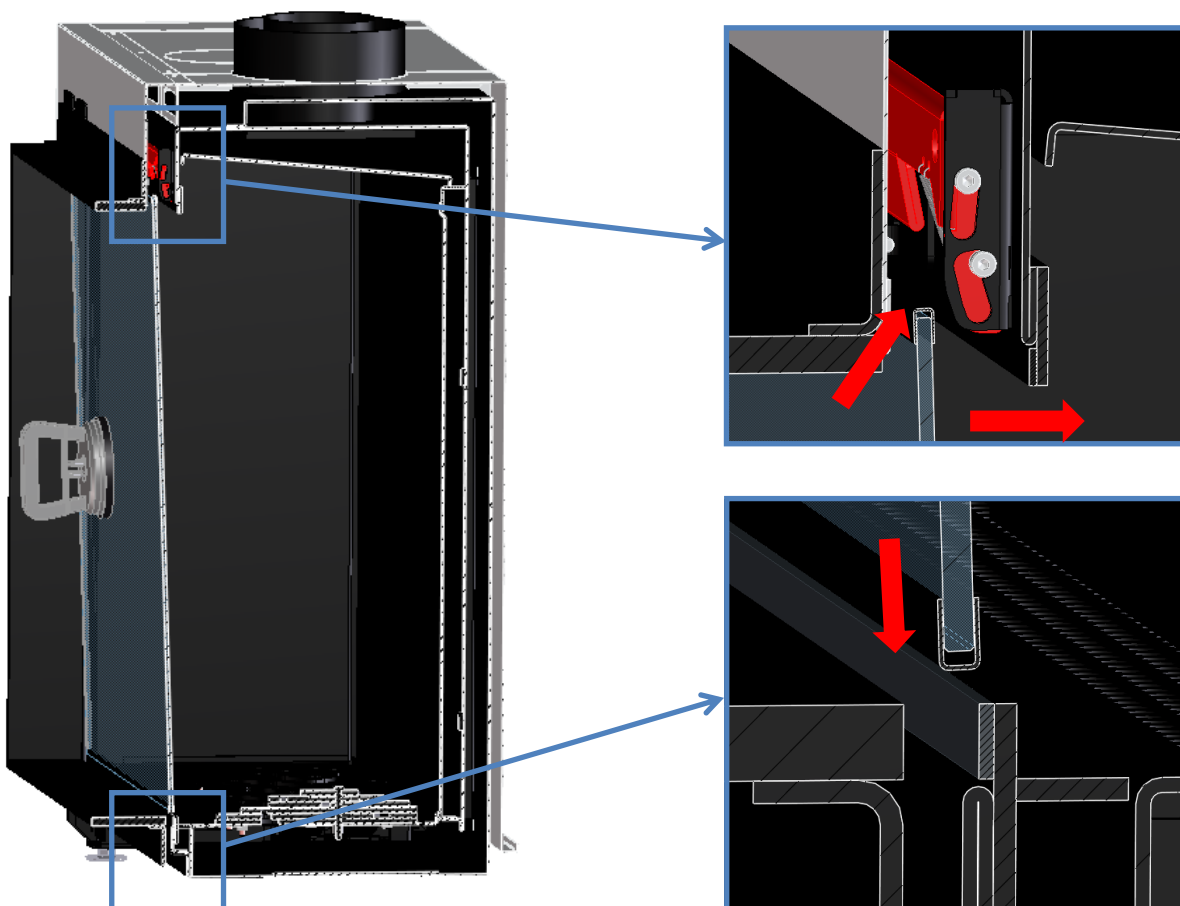
7.4 Corner and triangular fireplace

Place the supplied suction cups in the middle of the glass. Make sure that the suction cup is properly attached.

To put the front glass back in the fireplace, first insert the top of the pane in the convection opening at the front the hearth.



Then put the pane in the slot provided at the bottom. The pane can now be tilted shut at the top.



To close the closures for the glass, it is sufficient to pull the lip horizontally towards you. As a result, the spring will click the glass closure back downwards, clamping the glass in the process.

